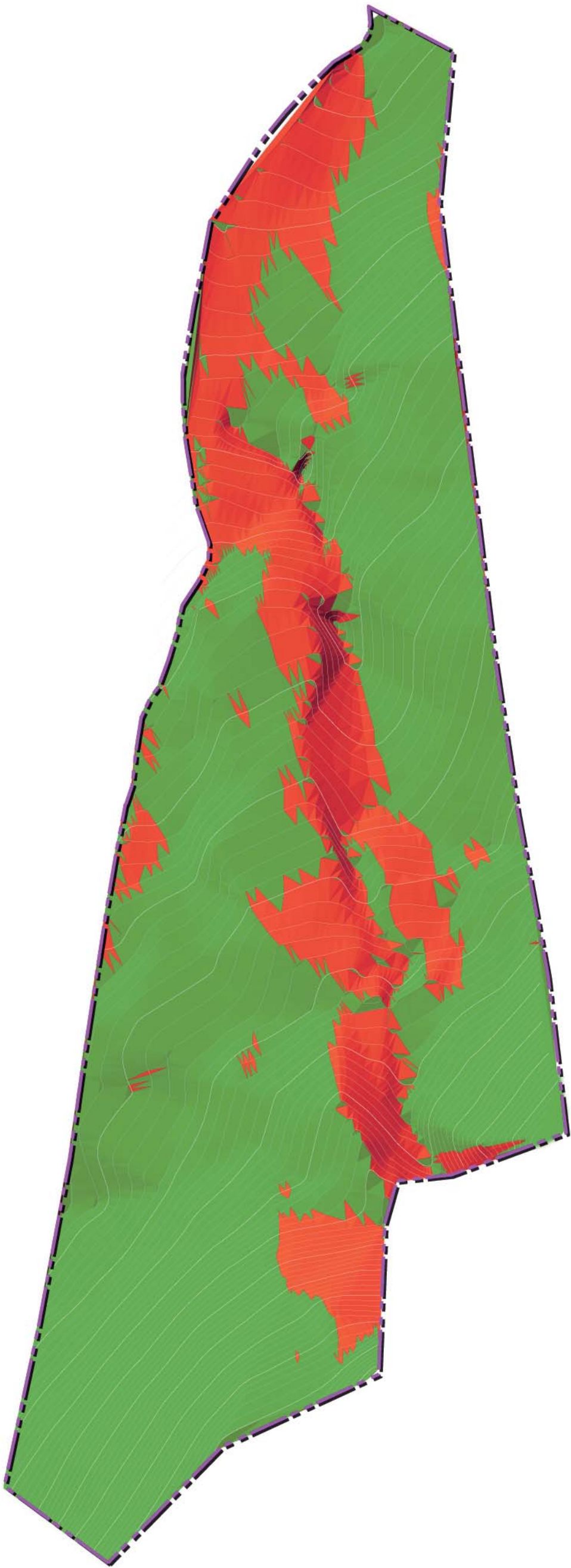


ASPECT

- North
- North-East
- East
- South-East
- South
- South-West
- West
- North West
- Flat



0 12.5 25 50 75 100 Meters

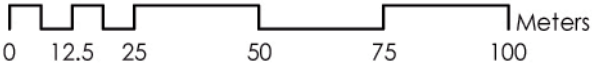


Suitable - North, North -West, West

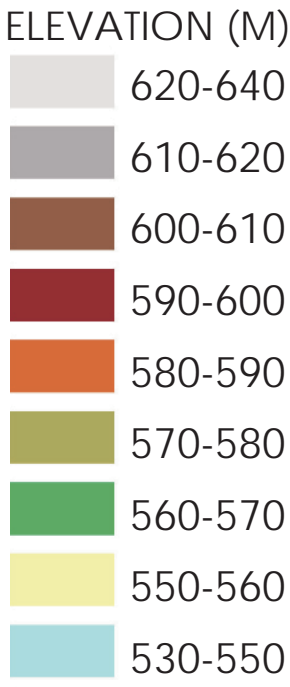


Not suitable

REASON: These slopes will help capture the strong Ocean Breezes and create convection cooling. Western slopes have direct views of the setting sun.









Suitable



Not suitable

REASON: These are elevations with views of Guadeloupe-Les Saintes Islands.



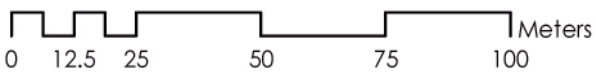
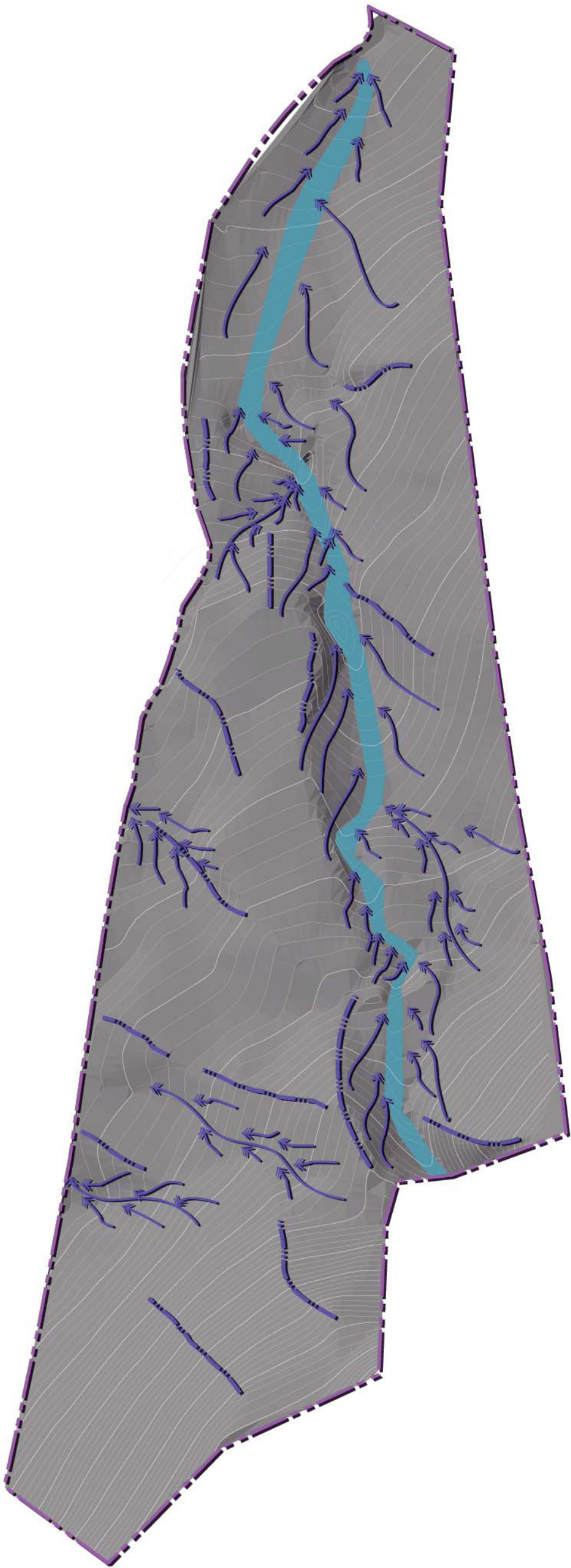
ELEVATION SUITABILITY

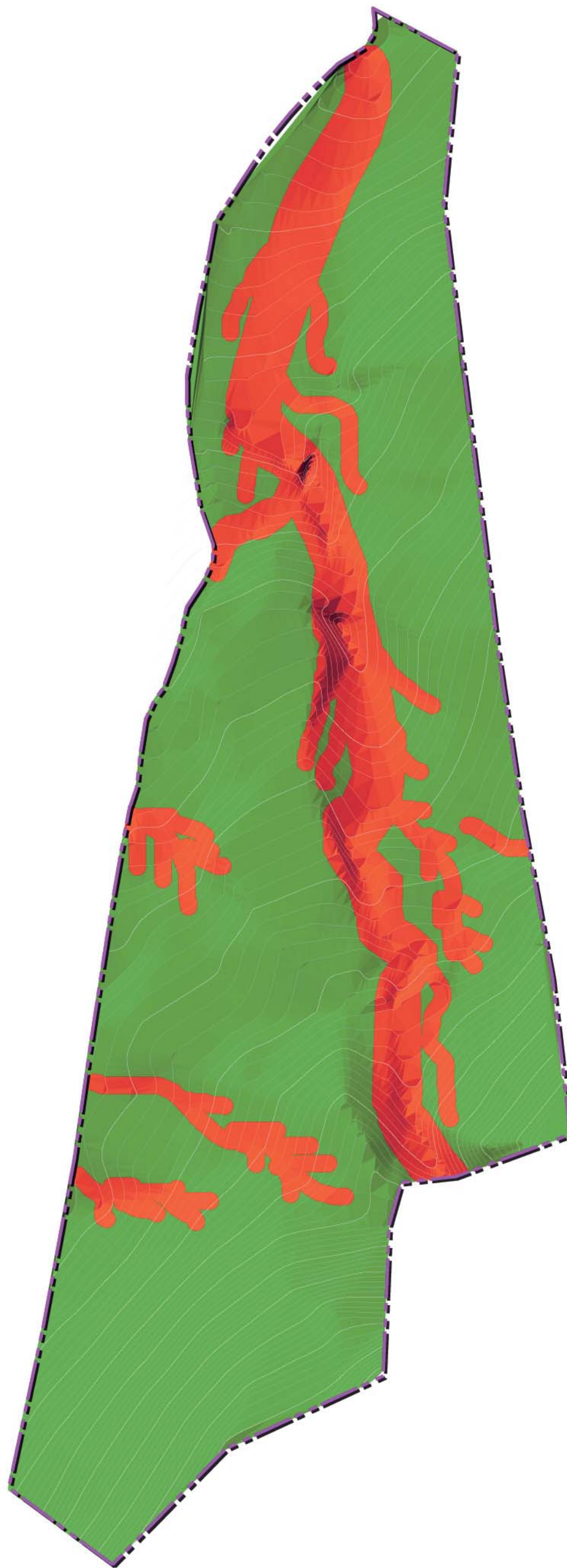


river

flow

ridges





Suitable

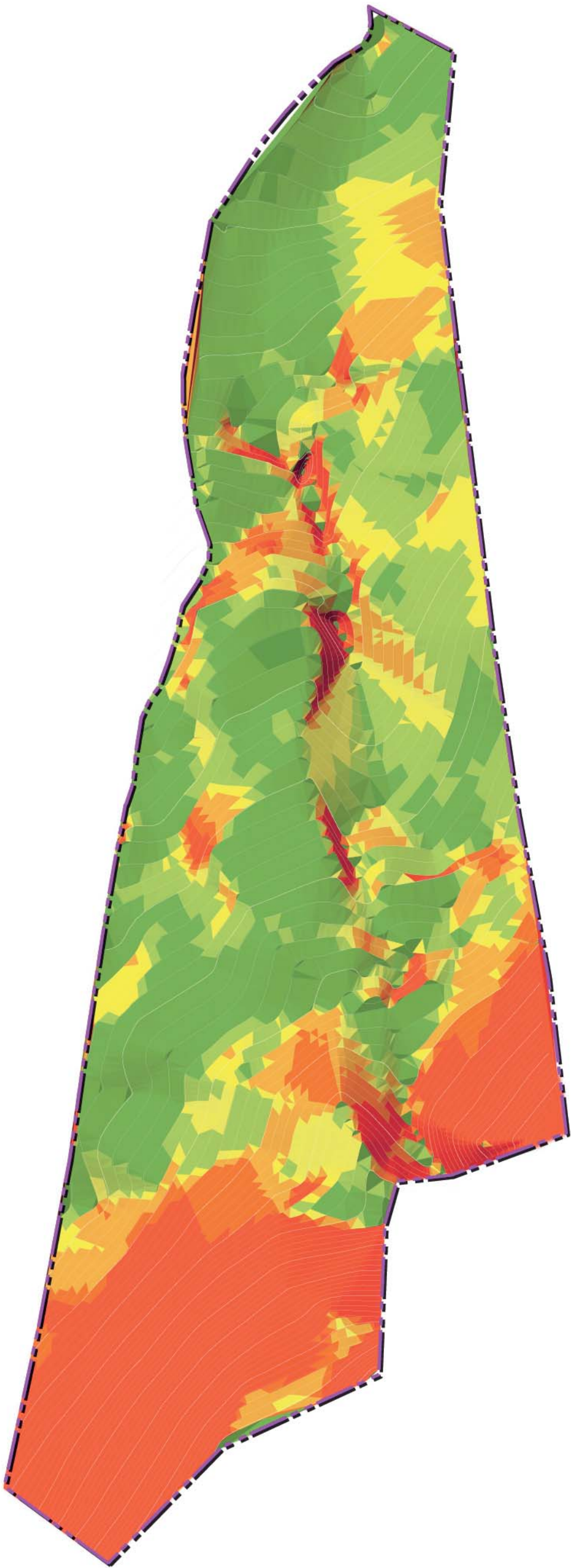


Not suitable - All areas 5m either side of the creek, and all drainage channels

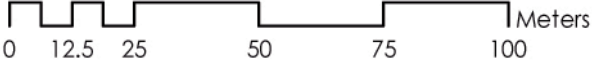
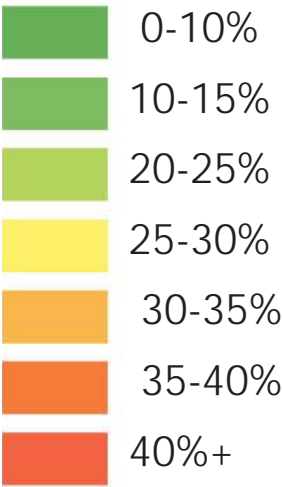
REASON: Ridges on this site are permissible to develop as the entire site is at the bottom of the mountain

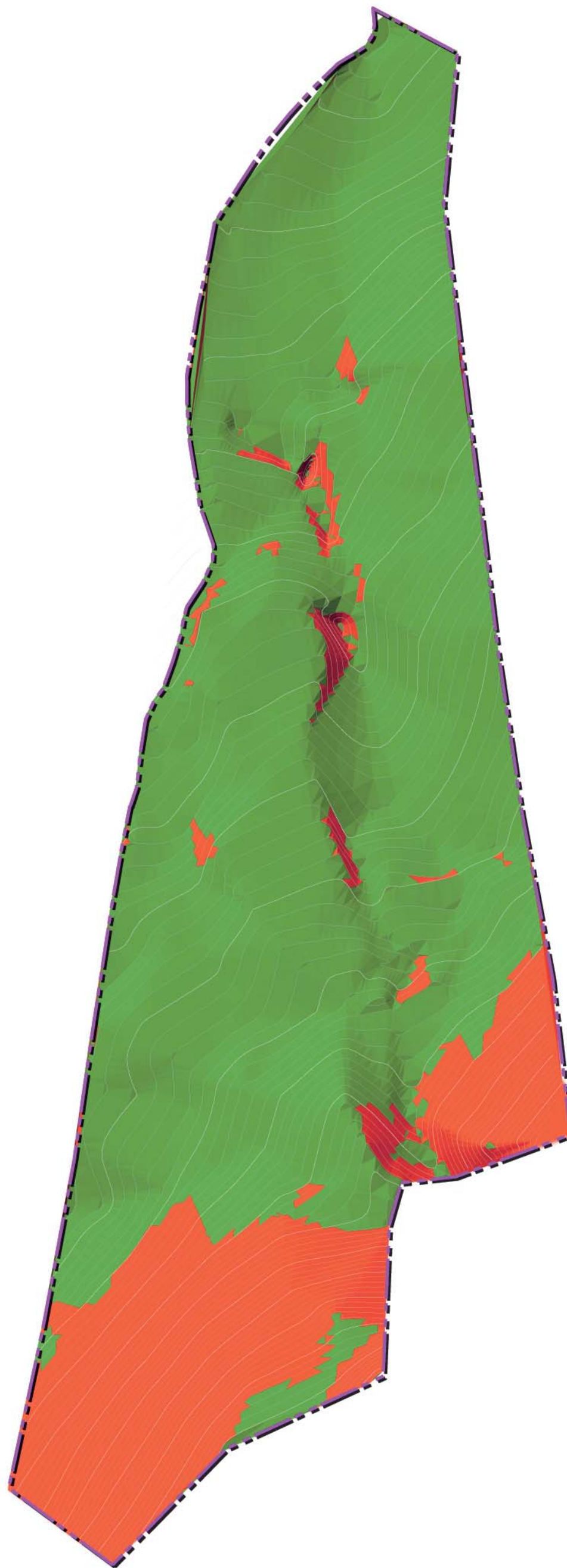






SLOPE





Suitable



Not suitable - slopes above 40%

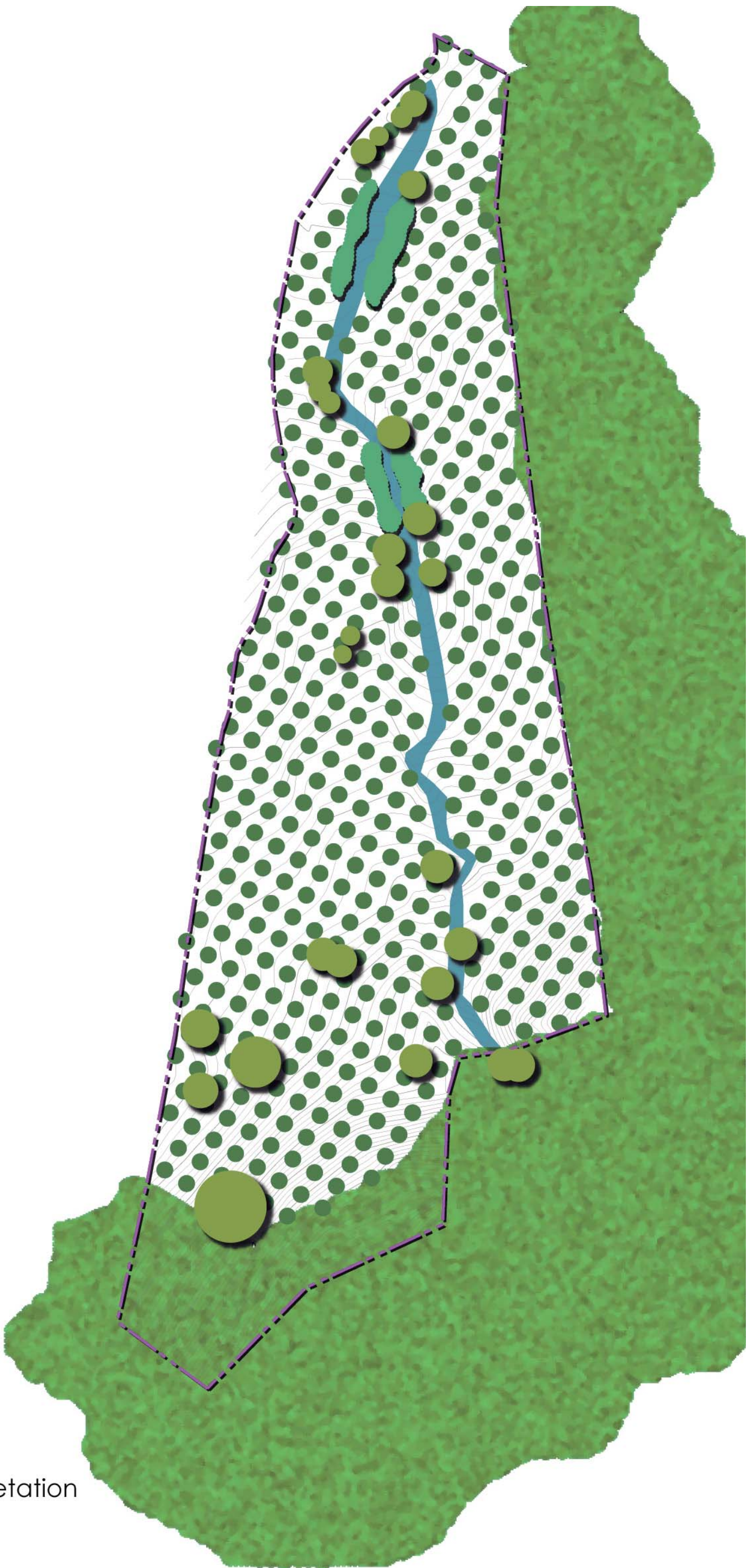
REASON: The buildings will be built on stilts thus slopes up to 40% are suitable.



SLOPE SUITABILITY





- native trees
- orchid
- riparian vegetation
- forest





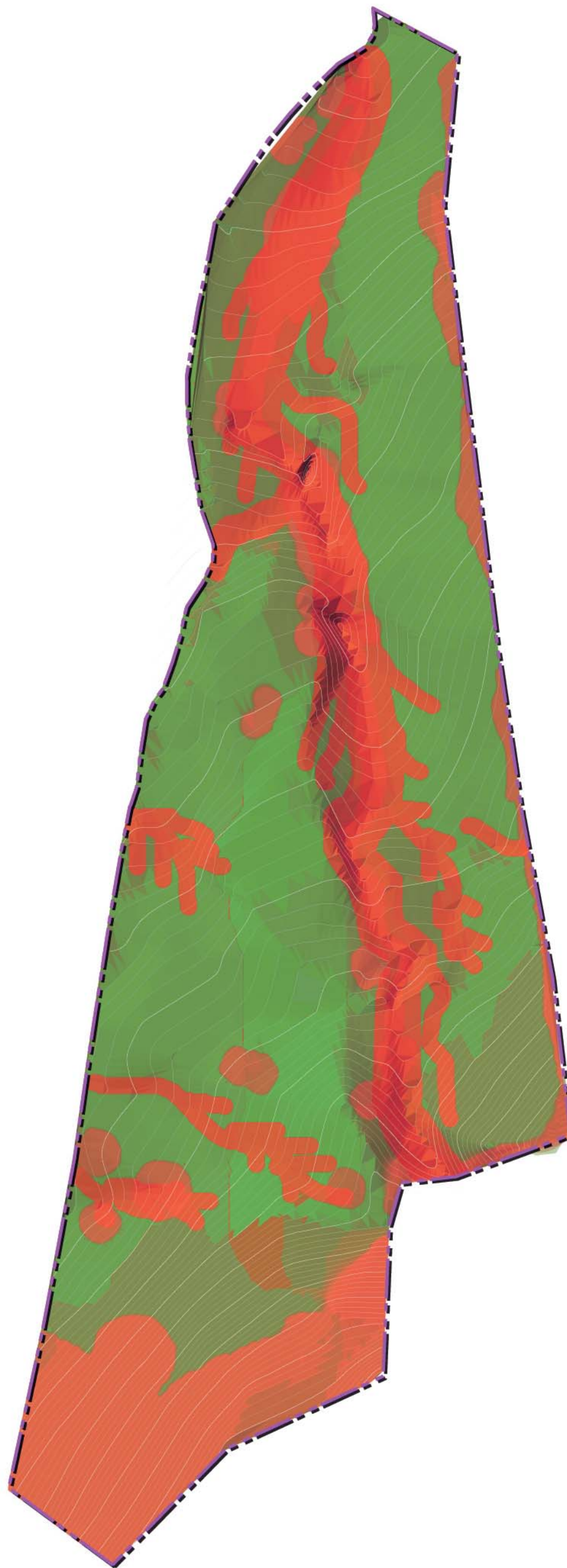


-  Suitable - disturbed areas
-  Not suitable

REASON: All the citrus groves are on disturbed areas and are suitable. Native trees, Riparian vegetation and existing forest are being protected.







CONSENSUS SUITABILITY DIAGRAM